



### Product Description

The light is fixed through an aperture in the bead head board which is held in place by a nut, secured from the back of the bed head. The light features a flexible stem to allow it to be positioned as required.

### Metal finish

The light comes in the following metal finishes:

- Clear Anodised Aluminium
- Anodised Titanium
- Anodised Bronze
- Polished Nickel Plate
- Gold Plate

### Leather finish

The light comes in the following leather finishes:

- Chocolate
- Beige
- Black
- Mushroom
- Off White

### Dimensions

Depth/400mm  
Bracket Depth/37mm

### Electrical

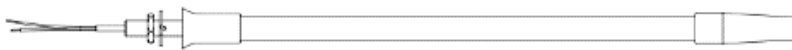
The light uses 0.7 Watts of energy and requires a 12v DC power Supply.

The Nimbus light is available in the following LED colours.

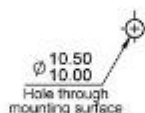
- Warm White
- Cool White

### Additional information

The Nimbus Through the Bed light requires a driver for installing on a Mains voltage circuit. This driver should be installed remotely in a suitable area behind the fitting.



Light  
Dimensions in mm



MOUNTING HOLE  
Dimensions in mm